



US009437014B2

(12) **United States Patent**
Perry et al.

(10) **Patent No.:** **US 9,437,014 B2**
(45) **Date of Patent:** **Sep. 6, 2016**

(54) **METHOD FOR LABELING SEGMENTS OF PATHS AS INTERIOR OR EXTERIOR**

USPC 345/440
See application file for complete search history.

(71) Applicant: **Mitsubishi Electric Research Laboratories, Inc.**, Cambridge, MA (US)

(56) **References Cited**

U.S. PATENT DOCUMENTS

(72) Inventors: **Ronald N Perry**, Cambridge, MA (US);
Elena J Jakubiak, Arlington, MA (US)

6,111,587	A *	8/2000	Covey et al.	345/629
6,173,075	B1 *	1/2001	Collins	382/203
6,690,385	B1	2/2004	Mukherjee	
7,321,373	B2	1/2008	Yap	
2010/0189353	A1 *	7/2010	Perry et al.	382/179
2011/0285736	A1 *	11/2011	Kilgard	345/584

(73) Assignee: **Mitsubishi Electric Research Laboratories, Inc.**, Cambridge, MA (US)

OTHER PUBLICATIONS

(*) Notice: Subject to any disclaimer, the term of this patent is extended or adjusted under 35 U.S.C. 154(b) by 349 days.

Author—K. Doan, Canon Inf. Syst. Res. Australia, North Ryde, NSW, Australia, Title—“Antialiased Rendering of Self-Intersecting Polygons using Polygon Decompositio”, Oct. 6-8, 2004, Publisher—IEEE, Computer Graphics and Applications, 2004. PG 2004. Proceedings. 12th Pacific Conference, pp. 383-39.*

(21) Appl. No.: **13/942,808**

* cited by examiner

(22) Filed: **Jul. 16, 2013**

Primary Examiner — Devona Faulk

Assistant Examiner — Nicole Gillespie

(65) **Prior Publication Data**

US 2015/0022531 A1 Jan. 22, 2015

(74) *Attorney, Agent, or Firm* — Gene Vinokur; James McAleenan; Hironori Tsukamoto

(51) **Int. Cl.**
G06T 11/20 (2006.01)
G09G 5/02 (2006.01)
G06T 11/00 (2006.01)
G06T 9/20 (2006.01)

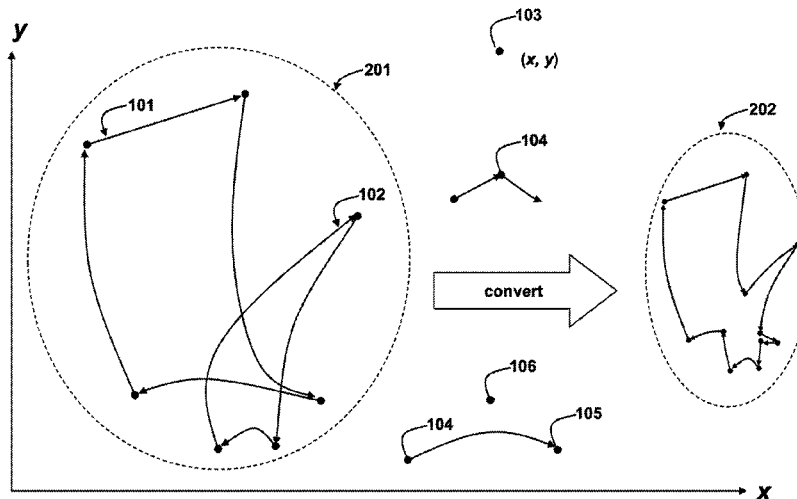
(57) **ABSTRACT**

(52) **U.S. Cl.**
CPC **G06T 9/20** (2013.01); **G06T 11/203** (2013.01)

A method for labeling a segment of a two-dimensional input path defined according to a nonzero winding rule as either interior or exterior is described. A winding number is initialized. A scan line that intersects the segment is identified. For each contour of the input path, winding values are accumulated into the winding number for any segments of the contour that cross the identified scan line, where the accumulation for coincident segments that cross the identified scan line at a same location as the segment is postponed. These coincident segments are marked and saved in a list. The labeling of the segment as either interior or exterior is determined from the list and the winding number.

(58) **Field of Classification Search**
CPC G06T 2207/20221; G06T 2219/2021; G06T 3/00; G06T 7/0079; G06T 7/0081; G06T 7/0083; G06T 7/0089; G06T 5/001; G06T 15/005; G06T 11/203; G06T 11/40; G06T 11/00; G06T 2200/12; G06T 9/20; G06T 2207/20112

15 Claims, 9 Drawing Sheets



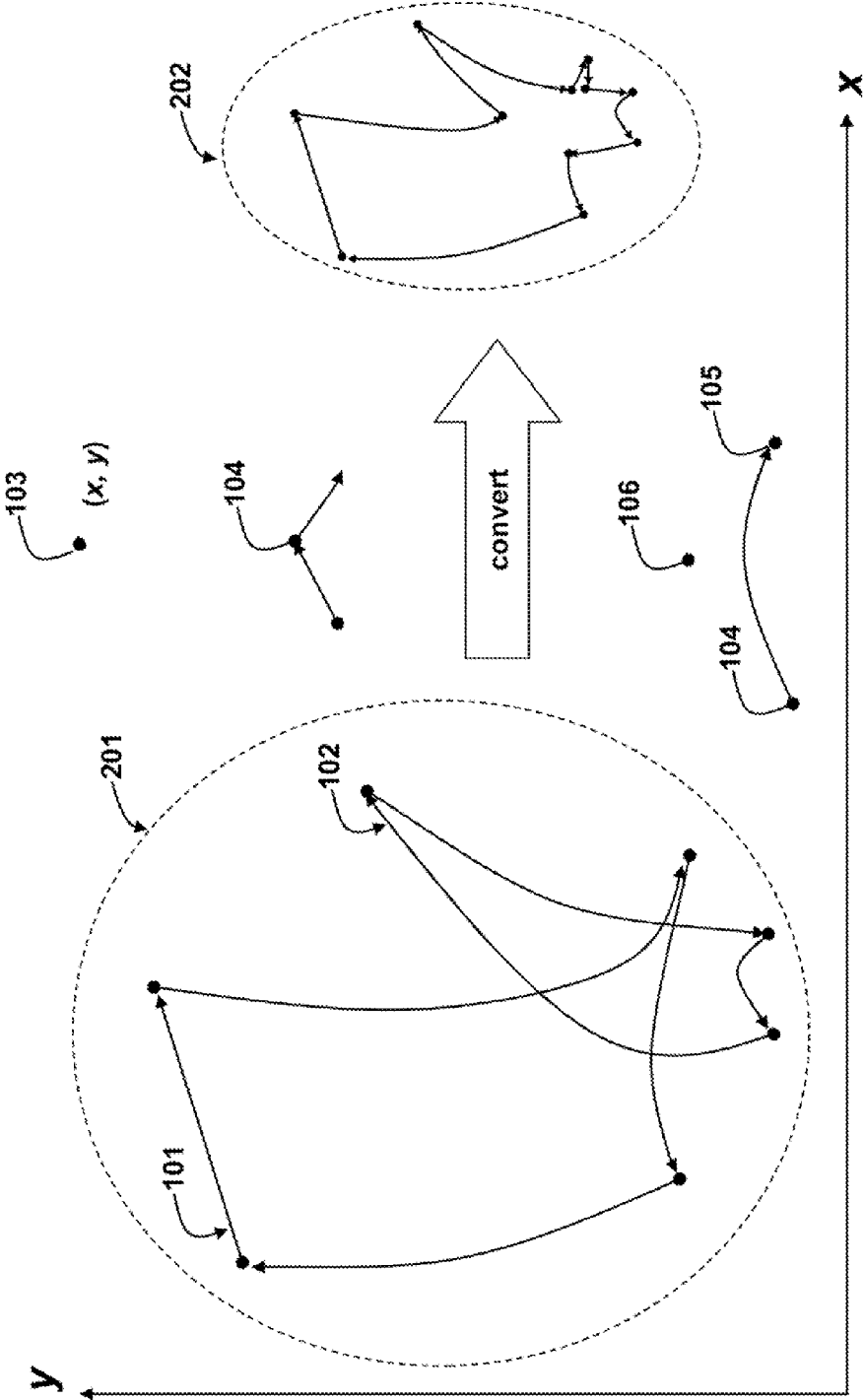


Fig. 1

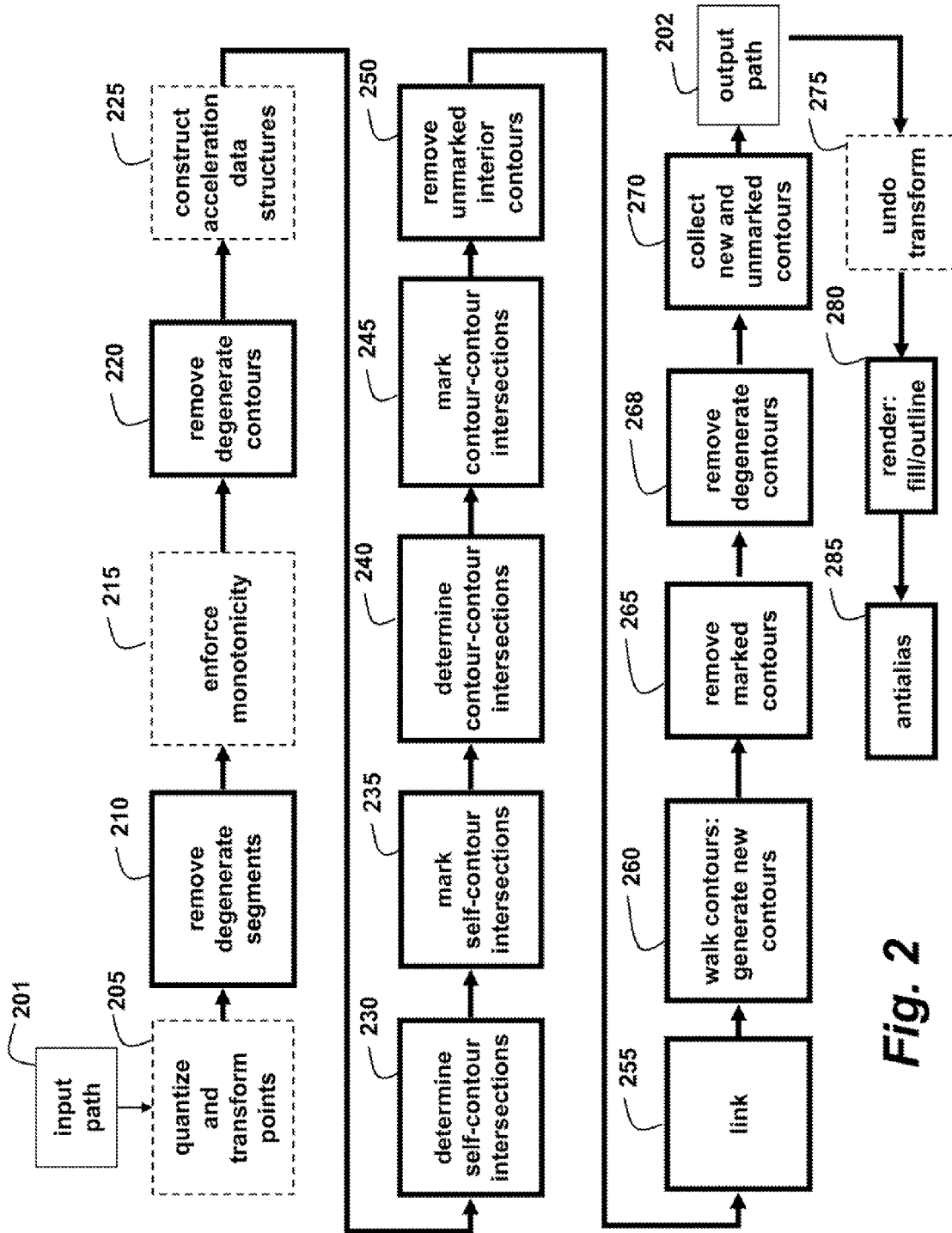


Fig. 2

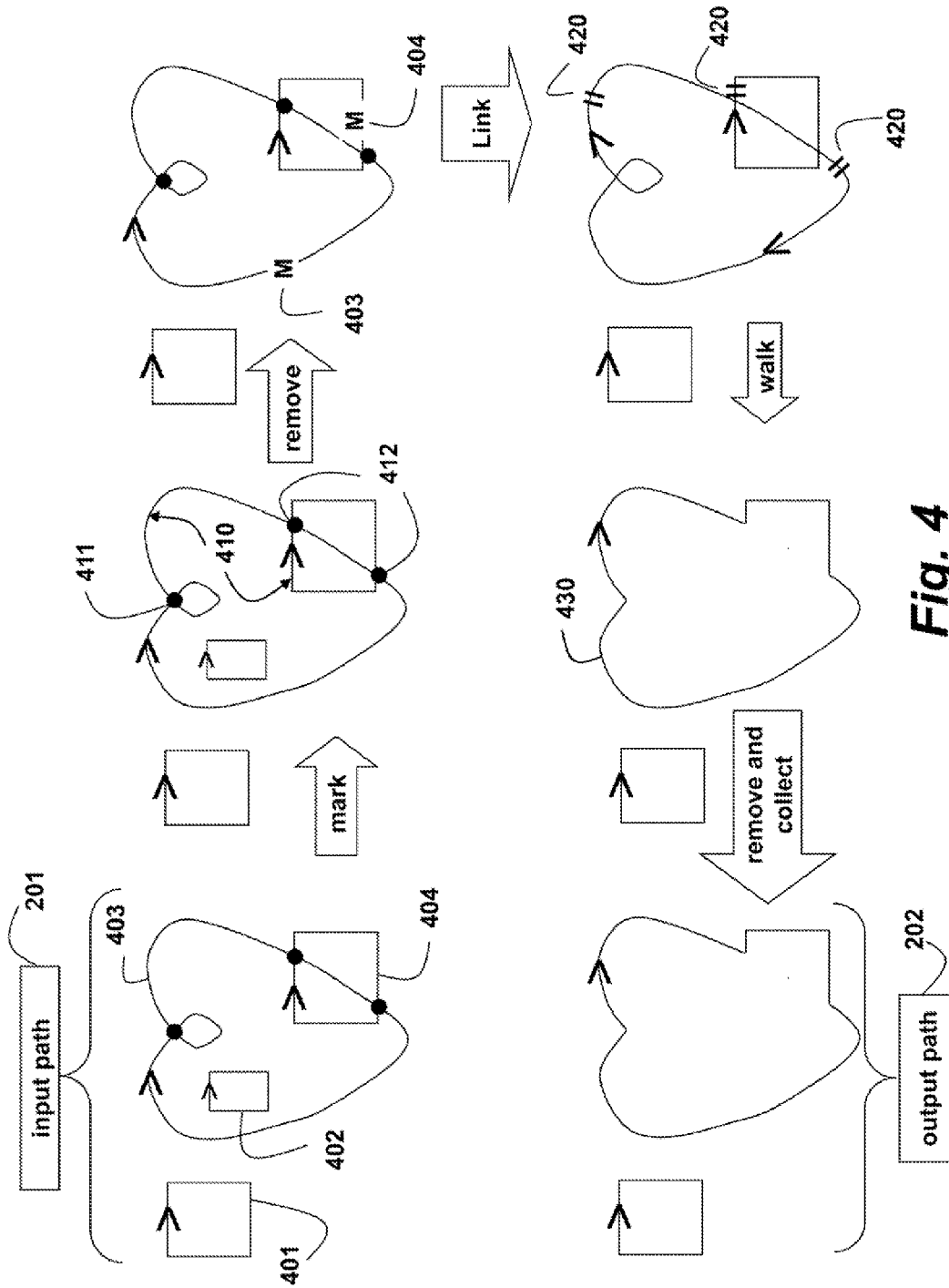


Fig. 4

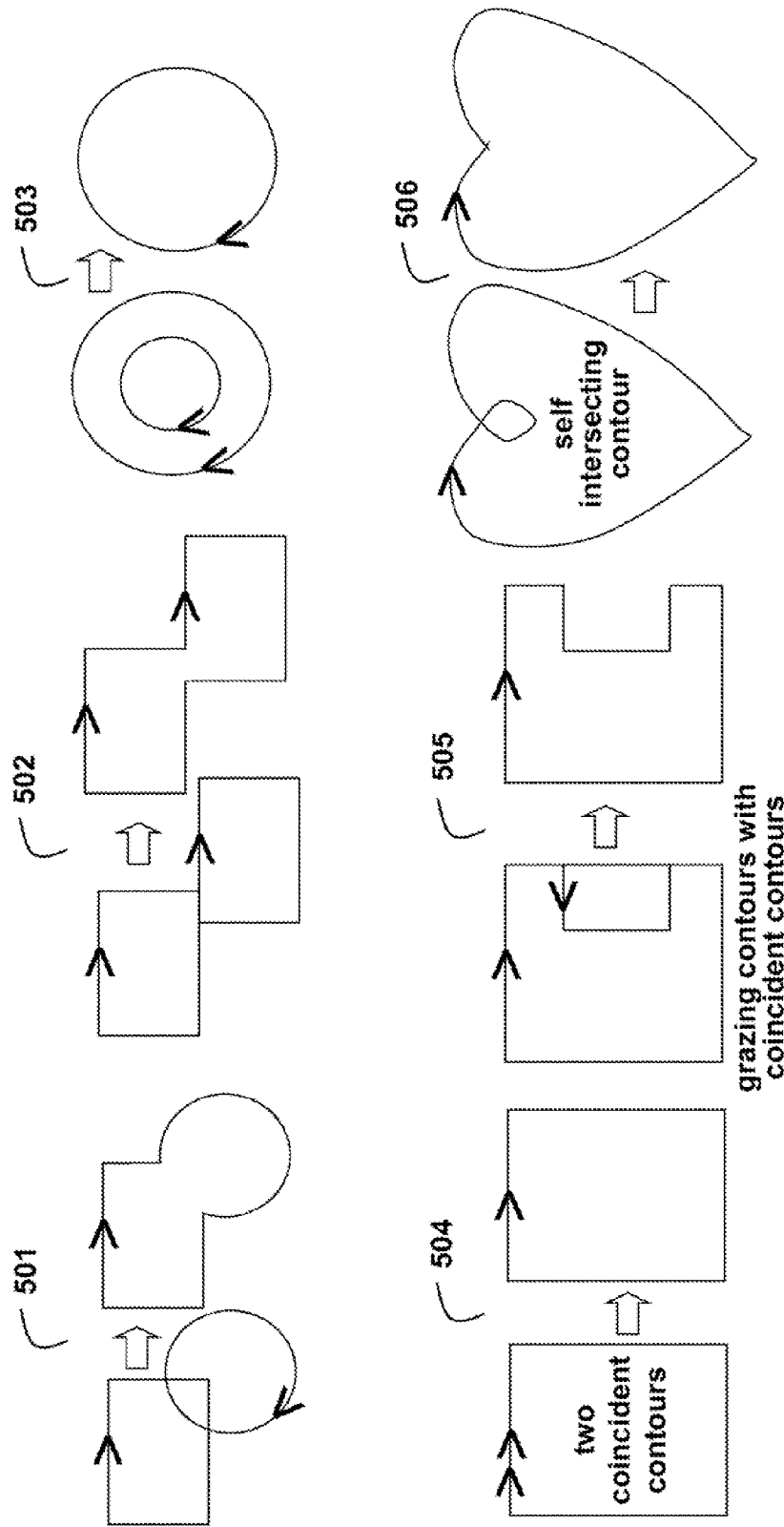


Fig. 5

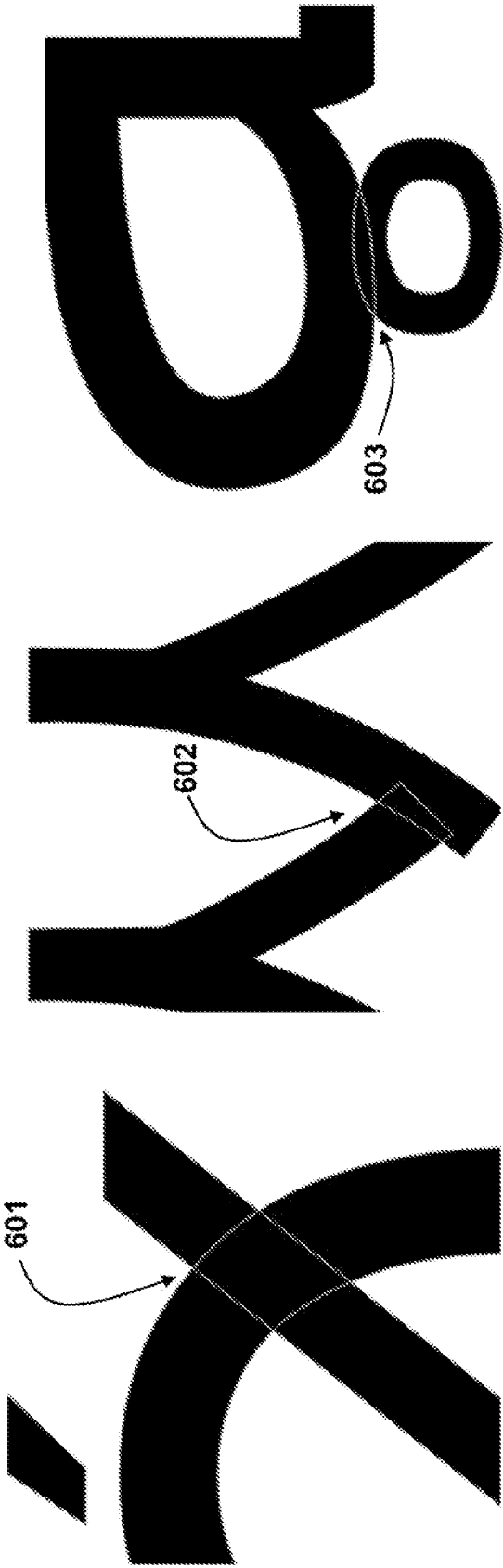


Fig. 6C
prior art

Fig. 6B
prior art

Fig. 6A
prior art

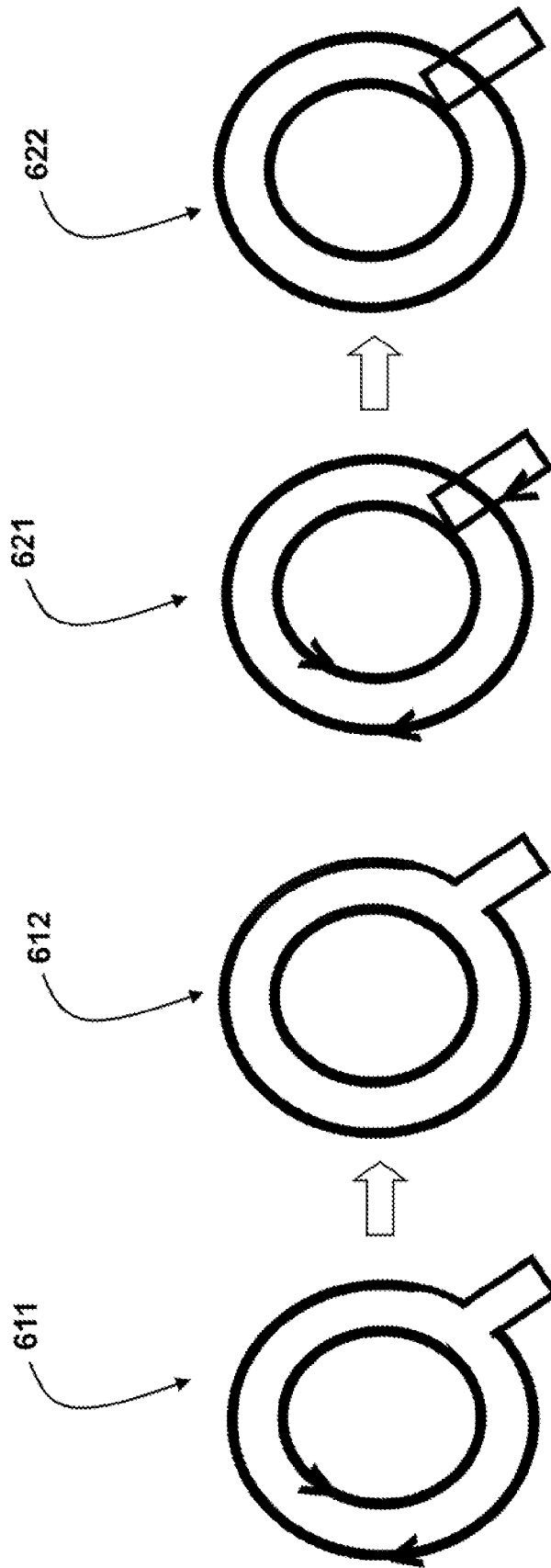


Fig. 6E
prior art

Fig. 6D
prior art

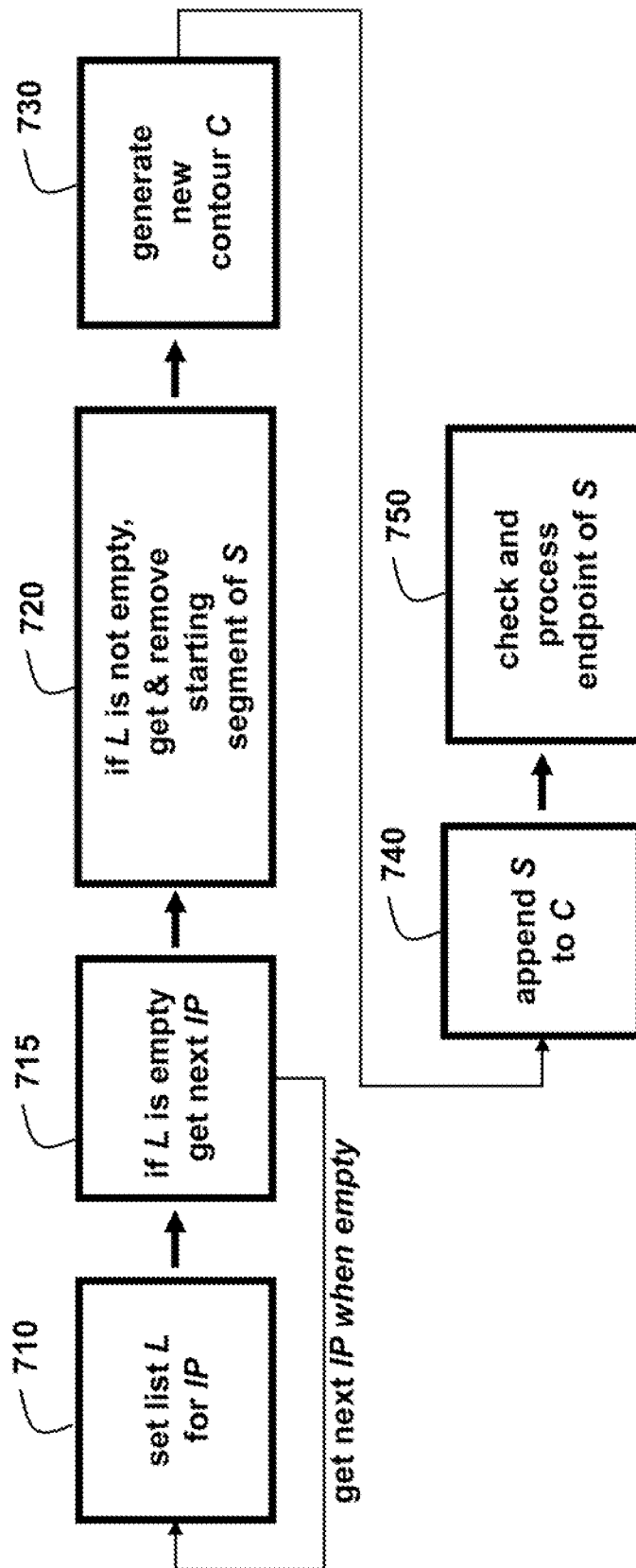


Fig. 7

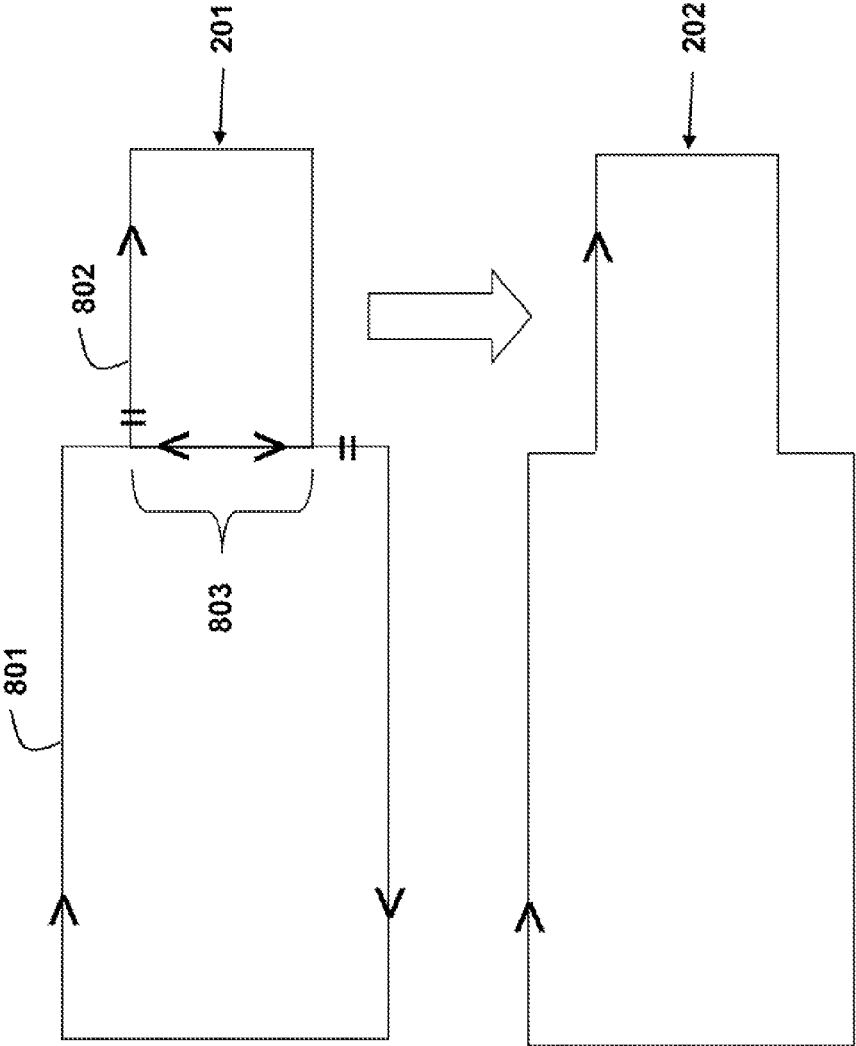


Fig. 8

METHOD FOR LABELING SEGMENTS OF PATHS AS INTERIOR OR EXTERIOR

FIELD OF THE INVENTION

This invention relates generally to computer graphics, and more particularly to labeling segments of paths as interior or exterior.

BACKGROUND OF THE INVENTION

Paths, Contours, and Glyphs

In the field of computer graphics, two-dimensional paths are often used to represent shapes of graphical objects that require rendering to a physical device. Examples of such objects include glyphs, structured vector graphics, illustrations, corporate logos, maps, and the like. Although we focus here on digital type, possibly the most common and important two-dimensional object, the following description applies to all types of two-dimensional objects. A collection of glyphs with a consistent design is called a font. Fonts are ubiquitous in computer applications. Fonts can be rendered on many types of physical devices such as computer monitors, telephones, printers, cameras, personal digital assistants (PDAs), global positioning devices, televisions, and the like.

A glyph is described by a path. Formally, a path includes a set of contours and a fill rule. A contour is a bounded and closed region represented as a sequence of piece wise continuous directed segments. Segments can be linear or curved. Fill rules include a nonzero winding rule and an even-odd parity rule.

The even odd parity rule determines the “insideness” of a point for a shape defined by a path by drawing a ray from that point to infinity in any direction and counting the number of path segments from the shape that the ray crosses. If this number is odd, then the point is inside; if even, the point is outside.

The non-zero winding rule is more complex. For a given path *C* and a given point construct a ray, i.e., a straight line, heading out from *P* in any direction towards infinity. Find all the intersections of *C* with this ray. Score up the winding number as follows: for every clockwise intersection, i.e., the path passing through the ray from left to right, as viewed from *P*, subtract 1; for every counter-clockwise intersection, i.e., path passing from right to left, as viewed from *P*, add 1. If the total winding number is zero, then *P* is outside *C*; otherwise, *P* is inside *C*.

Glyphs for computer applications are most frequently designed according to the nonzero winding rule. Glyphs can be filled with, e.g., a solid color, or their paths can be outlined, without filling interior portions, to achieve various visual effects.

Nonzero Winding Rule

There are several problems when rendering paths that are to be filled or outlined according to the nonzero winding rule. First, many rendering systems do not support the nonzero winding rule because of its complexity, whereas almost all rendering systems support the even-odd parity rule. Second, the nonzero winding rule is slower to execute than the even-odd parity rule. This can be a problem when rendering, on resource constrained devices.

Third, as shown in FIGS. 6A, 6B, and 6C for partial glyphs, the nonzero winding rule can produce “interior edge haloes” 601-603 for rendering systems that operate in a certain way. The halo artifacts occur because the rendering

first fills the shape, and then unconditionally antialiases all the edges, which spoils the filling.

Other interior artifacts are shown in FIGS. 6D and 6E. FIG. 6D shows a path 611 with two (directed) contours that would be outlined correctly in the prior art as the letter Q 612. However, if the path 621 is defined by three contours or natural “strokes” as shown in FIG. 6E, then the interior (non-boundary) edges are not removed during the rendering, and the outline 622 is incorrect.

Other problems exist when using the nonzero winding rule, even for rendering systems that support the rule. Paths can often contain self-intersections, coincident segments, and other degenerate cases that rendering systems improperly handle because the systems incorrectly fills or outlines the path.

Therefore, it is desirable to convert a path defined by the nonzero winding rule to an equivalent path that can be rendered with either the even-odd parity rule or the nonzero winding rule. It would be ideal if the equivalent path was simpler, smaller, faster to render, and did not exhibit any incorrect regions or annoying rendering artifacts due to degenerate cases such as those described above.

Furthermore, it is desirable to enable the correct and accurate determination of a segment of a path as either interior or exterior, even when the path contains self-intersections, coincident segments, and other degenerate cases. The correct and accurate determination for the segment permits path rendering systems, path compression systems, path simplification systems, and the like to function correctly when the path contains degenerate cases.

U.S. Pat. No. 6,111,587 describes a method that converts a polygon defined by a nonzero winding rule to a polygon defined by an even-odd parity rule. That method operates on closed polygons with linear edges, where each polygon includes a set of labeled contours. The method does not correctly handle degenerate cases such as coincident segments, coincident points, and self-intersections in all of their variations. That method cannot render a simplified polygon defined by the nonzero winding rule as output.

U.S. Pat. No. 7,321,373 describes a method for performing set operations on two or more arbitrary paths to produce a simple outline path. Like U.S. Pat. No. 6,111,587, that method does not handle all degenerate cases correctly.

SUMMARY OF THE INVENTION

A method for labeling a segment of a two-dimensional input path defined according to a nonzero winding rule as either interior or exterior is described. A winding number is initialized. A scan line that intersects the segment is identified. For each contour of the input path, winding values are accumulated into the winding number for any segments of the contour that cross the identified scan line, where the accumulation for coincident segments that cross the identified scan line at a same location as the segment is postponed. These coincident segments are marked and saved in a list. The labeling of the segment as either interior or exterior is determined from the list and the winding number.

Differences with the Prior Art

In general, prior art methods operate on closed polygons with linear edges where each polygon includes a set of known labeled contours. The embodiments operate on a more general representation of shape, i.e., open and closed paths with nonlinear edges and no predetermined labeling of which contours belong to which shapes.

Prior art methods convert paths filled by the nonzero winding rule to paths filled by the even-odd parity rule. The

embodiments convert to paths that can be filled with either the even-odd parity rule or the nonzero winding rule. The output paths in the embodiments often require less geometry than the input paths and therefore are more efficient to render and to store.

Prior art methods do not correctly handle coincident edges and coincident points in all cases, e.g., those methods use different steps to determine “outside edges,” and do not properly determine “outside edges” in all cases. There, contours “switch” differently due to how the “outside edges” are determined. Also, prior art methods do not always correctly handle degenerate segments, nor do they perform iterative intersection testing in the manner described in the embodiments on contours until convergence to properly handle arithmetic round off errors on underlying integer grid coordinates.

The prior art methods fail to handle all degenerate cases correctly, and do not convert input nonzero winding rule paths to equivalent output paths that are simpler with less geometry as the paths used by the invention. To facilitate this simplification, the embodiments perform various steps to remove unmarked interior contours, degenerate segments, and degenerate contours.

BRIEF DESCRIPTION OF THE DRAWING

FIG. 1 is a schematic of example contours and paths used by embodiments of the invention including input and output paths;

FIG. 2 is a flow diagram of a method for converting a two-dimensional input path defined by a nonzero winding rule to an equivalent 2D output path;

FIG. 3 is a flow diagram of a procedure for labeling segments according to embodiments of the invention;

FIG. 4 is a schematic of the method of FIG. 2;

FIG. 5 is a schematic of pairs of input and output paths according to embodiments of the invention;

FIGS. 6A, 6B, 6C, 6D and 6E are schematics of prior art renderings of glyphs;

FIG. 7 is a flow diagram of a walking procedure according to embodiments of the invention; and

FIG. 8 is a schematic of a procedure for labeling coincident edges according to embodiments of the invention.

DETAILED DESCRIPTION OF THE PREFERRED EMBODIMENTS

Some embodiments of the invention provide a method for converting a two-dimensional input path defined according to a nonzero winding rule to an equivalent 2D output path that can be rendered by either the nonzero winding rule or an even-odd parity rule. The embodiments correctly label a segment of a path as interior or exterior. The embodiments can produce renderings without aliasing or outlining artifacts. The embodiments are described using the following definitions.

DEFINITIONS

As shown in FIG. 1, an input path **201** includes a set of contours **101-102**. Contours are represented as a sequence of piecewise continuous directed segments. A degenerate contour is an unbounded or open region **104**, or a region with a zero area or a contour defined by a single point **103**.

A segment is defined using two or more points with (x, y) coordinates defined on an integer grid. The points include a start point **104** and an end point **105**. Optionally, there can

also be one or more control points **106**. For simplicity, this description is limited to linear and Bezier segments defined by two or three points, the extension to any number of points and other curved segments, such as B-splines, will be obvious to those skilled in the art. The segment emanates from the start point and terminates at the end point. The quadratic Bezier segment also includes an off-segment control point. The segment is exterior when it is a portion of a contour that defines a filled region according to the nonzero winding rule. Otherwise, the segment is interior.

Degenerate segments are transformed during processing to produce non-degenerate segments. Some examples follow. A segment start point cannot be coincident, to its endpoint. Such segments are discarded. The start point and end point of a quadratic Bezier curve segment $B(t)$, where t ranges from 0 to 1 inclusively, cannot lie on an “interior” portion of the curve segment, i.e., a portion of the curve segment with a parametric time t such that $0 < t < 1$. Such segments are replaced with a line segment. The off-curve control point of a quadratic Bezier curve segment cannot be coincident with either the start point or end point of that quadratic Bezier curve segment. Such segments are replaced with a line segment.

Segments of each contour of the path are partitioned into multiple segments to enforce that every segment is monotonic in both the x and y directions. A segment can be partitioned into two segments by inserting a control point on the segment interior. A quadratic Bezier segment is partitioned by inserting control points according to, e.g., a De Casteljau algorithm. This significantly improves performance when determining self-intersecting contours. It also makes the labeling of a segment as interior or exterior simple and accurate.

Segments are approximated using linear subdivisions. A line segment is trivially approximated using a single linear subdivision. A quadratic Bezier segment is approximated using one or more linear subdivisions. The control points of the linear subdivisions used to represent the quadratic Bezier segment are rounded to integer locations on the grid. A target rendering size is used to limit the number of linear subdivisions required to represent a quadratic Bezier segment, thereby improving the performance of computing intersections. Linear subdivisions are determined, on an as-needed basis and then saved for future processing. The start and end points of a linear subdivision cannot be coincident; such subdivisions are removed.

A junction contains data associated with a specific intersection. The junction specifies the Cartesian location of the intersection and maintains a list of exterior segments emanating from that intersection, i.e., a list of outbound exterior segments.

Convert Paths Defined by the Nonzero Winding Rule

As shown in FIG. 2, some embodiments of the invention provide a method for converting the input path **201** defined by the nonzero winding rule to the equivalent output path **202** that can be rendered by either the nonzero winding rule or the even-odd parity rule. The paths are defined in a two-dimensional (2D) coordinate system. The steps are schematically shown in FIG. 4.

Quantize and Transform

First, the method optionally converts, i.e., quantizes and transforms, **205** non-integer control points of the input path to integers, if necessary. For example, TrueType® fonts are defined on an integer coordinate system of sufficient precision called the EM square and therefore do not require quantization or transformation. When conversion is necessary, control points of the input path specified in floating

point or fixed point are transformed, e.g., multiplied by 256, and then rounded to determine integers of sufficient precision.

When this step is skipped, the control points of the input path remain in their original coordinate system. The original coordinate system can be defined on a floating, point or a fixed point grid, to name just a few. Arithmetic operations can be performed with a greater precision by skipping the quantizing and transforming, although this may increase processing time and produce flaws in the output path **202**.

Replace or Remove Degenerate Segments and Optionally Enforce Monotonicity

Then, after integer conversion, degenerate segments are removed **210**. Some examples of degenerate segments follow. A segment start point cannot be coincident to its endpoint. Such segments are discarded. The start point, and end point of a quadratic Bezier curve segment $B(t)$, where t ranges from 0 to 1 inclusively, cannot lie on an "interior" portion of the curve segment, i.e., a portion of the curve segment with a parametric time t such that $0 < t < 1$. Such segments are replaced with a line segment. The off-curve control point of a quadratic Bezier curve segment cannot be coincident with either the start point or end point of that quadratic Bezier curve segment. Such segments are replaced with a line segment.

Optionally, monotonicity of the segments in both the x and y directions are enforced **215**.

Remove Degenerate Contours

Degenerate contours are removed **220**. Some examples of degenerate contours include a contour comprised of a single point, an open contour, i.e., a contour which is not "water-tight," and a contour with no interior area.

Construct Data Structures for Accelerating Performance

Data structures for improving the run-time performance of the method are optionally constructed **225**. The data structures can also be constructed on demand and only when necessary during steps **230** and **240**. Example data structures include bounding boxes, proximity cluster trees, and grids for segments and contours.

Determine Intersections

Self-intersecting contours are determined **230**. Self-intersecting contours are partitioned and split at each point P of self-intersection by inserting new control points at P into the sequence of continuous segments preceding and following P . If the optional quantization and transformation step was performed, then intersections are determined at integer coordinates of the grid. Bezier segments are partitioned into linear subdivisions as needed when it is possible the segments could contribute to an intersection. Intersection testing is performed on the linear subdivisions to improve performance and accuracy. The monotonicity of the segments and the acceleration data structures are used to minimize segment-segment intersection tests. Mark **235** each contour of the input path containing a self-intersection. This is followed by determining **240** contour-contour intersections, which are also marked **245**. For the purpose of this description, contours that are not explicitly marked in some way are considered "unmarked."

Following are additional rules and conventions when determining intersections. To avoid redundant intersections, intersections that occur at $t=0$ are not counted, but intersections that occur at $t=1$ are counted. Two coincident, line segments have at most two intersections. A sequence of line segments connected in a contour at a common endpoint does not intersect at that common endpoint. After intersecting contours have been processed, any linear subdivisions generated are no longer used. The intersections are inserted into

the contours, e.g., Bezier segments are partitioned and split at their intersections, and the contours of the path are walked as described below.

The contour intersection steps are repeated until no further intersections occur. This repetition is performed because new intersections can occur as a result of previously determined intersections. This step ensures that the output path **202** is correct and that subsequent rendering and processing is without any artifacts. Note that most input paths require only a single iteration.

Remove Unmarked Interior Contours

Unmarked interior contours of the input path **201** are removed **250**. Determine the winding number of any segment, e.g., we typically use the first segment of each unmarked contour of the input path **201** to determine whether the segment is an interior contour and needs to be removed prior to the walking step. Contours of the input path **201** initially hidden may be revealed after the walking step and therefore are removed now.

Linking and Generating Junctions

Then, intersections are linked **255** by generating a junction associated with the Cartesian location of each intersection. A junction contains data about a specific intersection and specifies the Cartesian location of the intersection and maintains a list of segments starting at that location. For each unique intersection, i.e., each intersection with unique (x, y) coordinates, a list L of exterior outbound segments is determined. For each inbound segment to the intersection, a pointer to L is maintained. An exterior outbound segment is a segment starting at an intersection, emanating outward from the intersection, and whose winding number indicates it is an exterior edge of the input path **201**. The proper labeling of outbound segments as exterior is an important step. After linking **255**, the segments of L are properly labeled.

Walking

After the intersections are linked **255**, each marked contour of the path can be walked **260** to generate new contours by merging. The walking can start at any junction on a marked contour. Segments of marked contours are either copied to the new contours or removed when the segments are interior. The detailed steps of the walking process, as shown in FIG. 7, are as follows:

1. For each intersection point IP , i.e., for each junction, of the marked contours perform these steps:
2. Set **710** L to the list of exterior outbound segments of IP .
3. If **715** L is empty, then goto step 1 and proceed to the next intersection point.
4. If **720** L is not empty, then get and remove the starting segment L . Set S to this segment.
5. Generate **730** a new contour C .
6. Append **740** segment S to the end of C .
7. If **750** the end point of S is IP , then we have traversed back to IP . Goto step 3.
8. If **750** the end point of S is not another intersection point, then get the next segment, set this segment to S , and proceed to step 6.
9. If **750** the end point of S is another intersection point Q other than IP , then switch contours as follows: get the junction J of Q , get and remove an exterior outbound segment of J , set this exterior outbound segment to S , and proceed to step 6.

Remove Marked Contours

Next, marked contours of the input path **201** are removed **265**. Segments of marked contours that contribute to the output path **202** have been copied into the new contours in the previous walking step.

Degenerate Contours are Removed

Next, degenerate contours of the remaining contours are removed **268**. Examples of degenerate contours include a contour with a single point, an open contour, and a contour with no interior area.

Forming the Output Path

Finally, the new contours and unmarked contours are collected **270** as the output path **202**. The simplified output path can be rendered by either the nonzero winding rule or the even-odd parity rule.

Invert Quantization and Transformation

If the input path **201** was optionally quantized and transformed in step **205**, then that process is inverted **275** on the output path **202** to restore the coordinates to their original coordinate system.

Effects of the Conversion

FIG. **5** shows example pairs of paths **501-506**, with the input paths **201** on the left, and the output paths **202** on the right. The examples show that the output paths **202** will be correctly rendered with either the nonzero winding rule or the even odd parity rule. Note the presence of degenerate cases, such as coincident segments in the input paths **201**, and their proper handling to produce the correct output paths **202**.

The merge contours procedure is object-based. The procedure explicitly determines the 2D output path **202** for further processing. Prior art image-based approaches perform this operation during rasterization so that only the pixels exhibit the result, and an explicit 2D output dimensional path is not formed as described herein.

The input to the merge contours procedure is a single directed 2D path, such as a path representing a glyph. The interior of the path is defined by the nonzero winding rule. The output is an equivalent and simplified 2D path that can be rendered by either the nonzero winding rule or the even-odd parity rule. The simplification can include removal of overlapping, self-intersecting, degenerate, and unnecessary contours.

Path Conversion: An Example

FIG. **4** shows the operation of the method for converting an input path **201** schematically. The input path **201** includes an exterior contour **401**, an interior contour **402**, and two intersecting contours **403-404**. The contour **403** is also self-intersecting **411**. The contours **403-404** have two contour-contour intersections **412**. The contours **403-404** with intersections are marked (M). The unmarked interior contour **402** is removed. Next, junctions are associated with the intersections. Outbound segments **420** at each junction are interior or exterior. The exterior outbound segments at each junction are labeled and indicated by “||”.

During the walking, a new contour **430** is generated by merging contours while marked and degenerate contours are removed.

The steps of the above method, as well as any other procedures or methods described herein, can be performed in a processor connected to a memory and input/output interfaces and devices as known in the art.

Rendering: Filling or Outlining Paths Without Artifacts

The output path **202** as generated above can be rendered **280** by filling or outlining with either the nonzero winding rule or the even-odd parity rule. Antialiasing **285** can also be applied. In contrast with the prior art, the filled path does not include an interior aliasing artifacts. Similarly, the outlined path does not include any interior edge artifacts.

Interior and Exterior Segment Labeling

FIG. **3** shows a procedure to determine whether a segment S is interior or exterior. First, a winding number W is

initialized **305** to zero. Next, a scan line that is guaranteed to intersect the segment is identified **310**. If monotonicity is enforced for segments in both x and y directions, then the scan line can be quickly and accurately identified to be either a horizontal or vertical scan line passing through the midpoint of the segment.

For each contour C, the winding values are accumulated **315** into W for any segments of the contour C that cross the identified scan line before crossing the segment S. The accumulation of winding values into W for coincident segments of the contour C that cross the scan line at the same location as segment S is postponed until after all contours have been processed. The coincident segments have to be treated as a group, as far as the winding number is concerned, because they overlap and cancel each other. The coincident segments are marked and saved **320** in a list L; also see FIG. **8** for coincident segments.

When there are no coincident segments, we proceed as follows. If **345** W is nonzero and W, when updated to account for S, is nonzero, then the segment S is marked **350** interior, otherwise the segment S is marked exterior.

When there are coincident segments, we proceed as follows. Add **335** segment S to the list L of saved coincident segments. Pairs of coincident segments in the list L that have opposite directions cancel each other out, and the accumulation of their winding numbers is zero and does not change W. The winding values are accumulated **340** into W for the remaining non-cancelled segments in the list L, excluding segment S. If **345** W is nonzero and W, when updated to account for S, is nonzero, then the segment S is marked **350** interior, otherwise the segment S is marked exterior.

It is noted that prior art methods do not process coincident segments as described above, and therefore can produce incorrect output paths with interior artifacts.

FIG. **8** schematically shows the labeling of outbound segments of contours **801-802** of the input path **201** so that the output path **202** is correct. The contours have coincident segments **803**. The exterior outbound segments are indicated by “||”. Because of the nature of the steps outlined above, the segments **803** are correctly identified as interior, and hence these segments are removed during the walk. To the best of our knowledge no prior art rendering deals with this case correctly in all of its variations. In this case, the coincident segments need to be treated as a group when the winding number is determined.

Applications and Distinguishing Features

Rendering methods that fill paths according to the even-odd parity rule can use the merge contours procedure as outlined in FIG. **2** as a preprocessing step to correctly render paths that are designed to be filled according to the nonzero winding rule, e.g., glyphs in TrueType® fonts.

The merge contours procedure can also be used to eliminate interior edge haloes and outlining artifacts present in various font rendering systems. The even-odd parity rule is less complex and faster to perform than the nonzero winding rule. Consequently, the merge contours procedure can be used to convert the input path to an equivalent output path and then rendered using the even-odd parity rule.

The merge contours procedure can also be used to perform two-dimensional constructive solid geometry (CSG) operations, such as union, intersection, and difference, on two-dimensional paths.

The merge contours procedure solves a very difficult computational geometry problem in real-time and has several distinguishing features when compared to the prior art. The merge contours procedure can handle difficult grazing conditions and singularities, e.g., coincident points and

segments. The procedure supports nonlinear curved edges, as well as directed edges. Most prior art procedures only work on polygons with linear edges. The merge contours procedure can use integer arithmetic and operate on an integer grid. It is one to two orders of magnitude faster than comparable prior art procedures.

The merge contours procedure also provides concurrent classification of coincident edges to properly handle grazing conditions, degenerate preprocessing and post processing of segments and contours, and on-demand tessellation of curved segments for determining intersections. The tessellation of curved segments can be based on a target rendering size, thereby optimizing performance for the given target. Monotonicity of segments can be enforced for better performance and accuracy. During the merging, all control points can be represented on an integer coordinate system to improve accuracy and performance. When contour segments are partitioned and split at intersections, the procedure can use iterative intersection testing until convergence to ensure robustness.

The correct labeling of segments as either interior or exterior permits path rendering systems, path compression systems, path simplification systems, and the like to function correctly when the path contains degenerate cases.

Although the invention has been described by way of examples of preferred embodiments, it is to be understood that various other adaptations and modifications can be made within the spirit and scope of the invention. Therefore, it is the object of the appended claims to cover all such variations and modifications as come within the true spirit, and scope of the invention.

We claim:

1. A method for labeling a segment of an object-based input path as either interior or exterior, wherein the object-based input path is defined according to a nonzero winding rule in a two-dimensional (2D) coordinate system the object-based input path includes a set of contours, and wherein each contour includes a sequence of segments, the method comprising the steps of:

initializing a winding number to zero;

identifying a scan line that intersects the segment;

accumulating, for each contour, winding values into the winding number for any segments of the contour that cross the scan line, wherein the accumulation for coincident segments of the contour that cross the scan line at a same location as the segment is postponed until after all the contours have been processed, and wherein the coincident segments are marked, and wherein the marked coincident segments are saved in a list;

labeling the segment as interior if the list is empty and the winding number for is not zero and the winding number when updated to account for the segment is not zero;

labeling the segment as exterior if the list is empty and either the winding number is zero or the winding number when updated to account for the segment is zero;

labeling the segment as interior if the list is not empty and, after canceling out pairs of segments of the list that have opposite directions, the list is augmented to contain the segment, and accumulating the winding values into the winding number for any remaining non-cancelled segments in the list excluding the segment, the winding number is not zero and the winding number when updated to account for the segment is not zero; and

labeling the segment as exterior if the list is not empty and, after canceling out pairs of segments of the list that

have opposite directions, the list is augmented to contain the segment, and accumulating the winding values into the winding number for the remaining non-cancelled segments in the list excluding the segment, either the winding number is zero or the winding number when updated to account for the segment is zero, wherein the labeled segment when rendered to a pixel grid represents sub-pixel geometry, such that the object-based input path when rendered labels the segment within a single pixel, wherein the steps are performed in a processor.

2. The method of claim 1, wherein the object-based input path represents a glyph.

3. The method of claim 1, wherein the object-based input path represents an illustration.

4. The method of claim 1, wherein the object-based input path represents a structured vector graphic.

5. The method of claim 1, further comprising:

enforcing monotonicity on the segments and identifying the scan line to be either a horizontal or vertical scan line passing through a midpoint of the segment.

6. The method of claim 1, wherein the degenerate segments include any segment with a start point coincident with an end point of the segment, any segment that is a curve with the start point and the end point on an interior portion of the curve, and any segment with an off-curve control point of the curve that is coincident with either the start point or the end point of the curve, and wherein the degenerate contours include any contour that is an unbounded or an open region, or a region with a zero area, or any contour defined by a single point.

7. The method of claim 1, wherein some of the segments are coincident.

8. The method of claim 1, wherein some of the contours are self-intersecting.

9. The method of claim 1, wherein intersection points between the contours are determined prior to the initializing.

10. The method of claim 1, wherein the labeled segment is used by a rendering system to rasterize the object-based input path without artifacts.

11. The method of claim 1, wherein the labeled segment is used by a rendering system to outline the object-based input path without artifacts.

12. The method of claim 1, wherein the labeled segment is used by a data compression system to compress the object-based input path.

13. A system for providing labeling of a segment of an object-based input path as either interior or exterior, wherein the object-based input path is defined according to a nonzero winding rule in a two-dimensional (2D) coordinate system the object-based input path includes a set of contours, and wherein each contour includes a sequence of segments, the system comprising:

a data storage memory unit for storing information therein about one or more lists, one or more paths and related data so as to provide labeling for the segment of the object-based input path;

a processor, coupled to the data storage memory unit, that is configured to:

initialize a winding number to zero;

identify a scan line that intersects the segment;

accumulate, for each contour, winding values into the winding number for any segments of the contour that cross the scan line, wherein the accumulation for coincident segments of the contour that cross the scan line at a same location as the segment is postponed until after all the contours have been

11

processed, and wherein the coincident segments are marked, and the marked coincident segments are saved in a list;

label the segment as interior, if the list is empty and, the winding number is not zero and the winding number when updated to account for the segment is not zero; 5

label the segment as exterior, if the list is empty and either the winding number is zero or the winding number when updated to account for the segment is zero;

label the segment as interior, if the list is not empty and, after canceling out pairs of segments of the list that have opposite directions, the list is augmented to contain the segment, and accumulating the winding values into the winding number for any remaining non-cancelled segments in the list excluding the segment, the winding number is not zero and the winding number when updated to account for the segment is not zero; and 10

label the segment as exterior, if the list is not empty and, after canceling out pairs of segments of the list 15

12

that have opposite directions, the list is augmented to contain the segment, and accumulating the winding values into the winding number for the remaining non-cancelled segments in the list excluding the segment, either the winding number is zero or the winding number when updated to account for the segment is zero, wherein the labeled segment when rendered to a pixel grid is capable of representing sub-pixel geometry, such that the object-based input path when rendered labels the segment within a single pixel, wherein the steps are performed in a processor.

14. The system as claimed in claim **13**, wherein the labeled segment is used by a rendering system that includes using nonlinear curved edges and directed edges.

15. The system as claimed in claim **13**, wherein the labeled segment is used by a rendering system to outline the object-based input path without artifacts.

* * * * *